



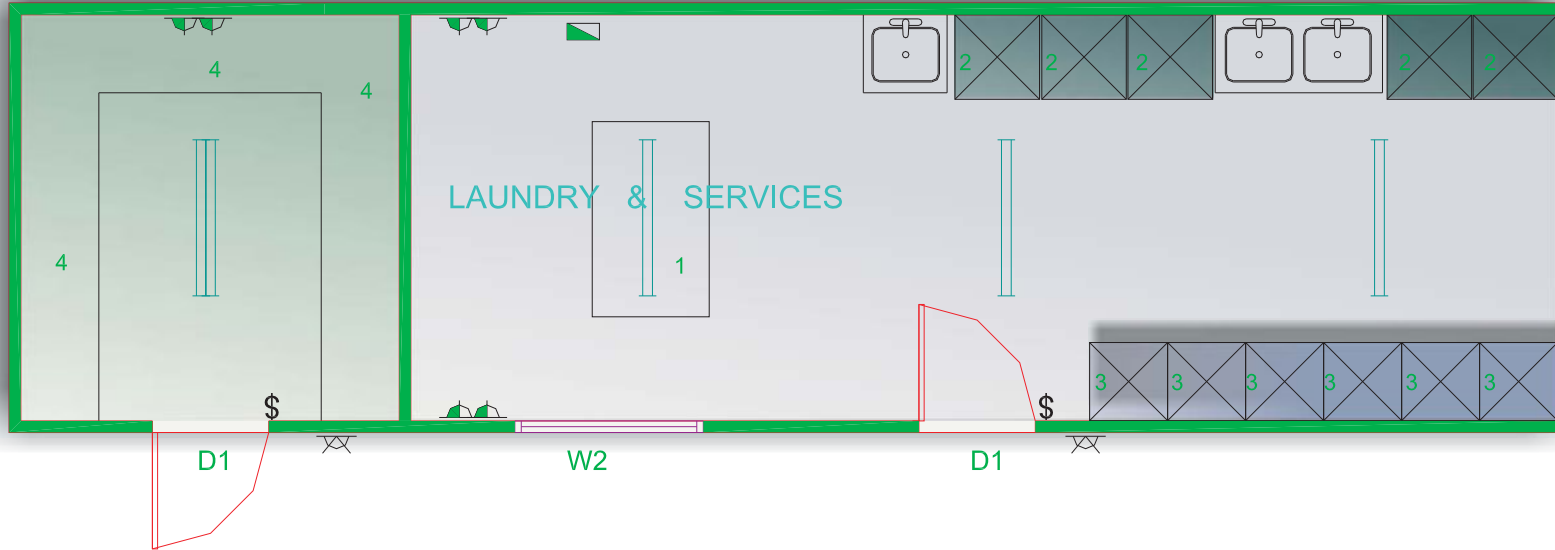
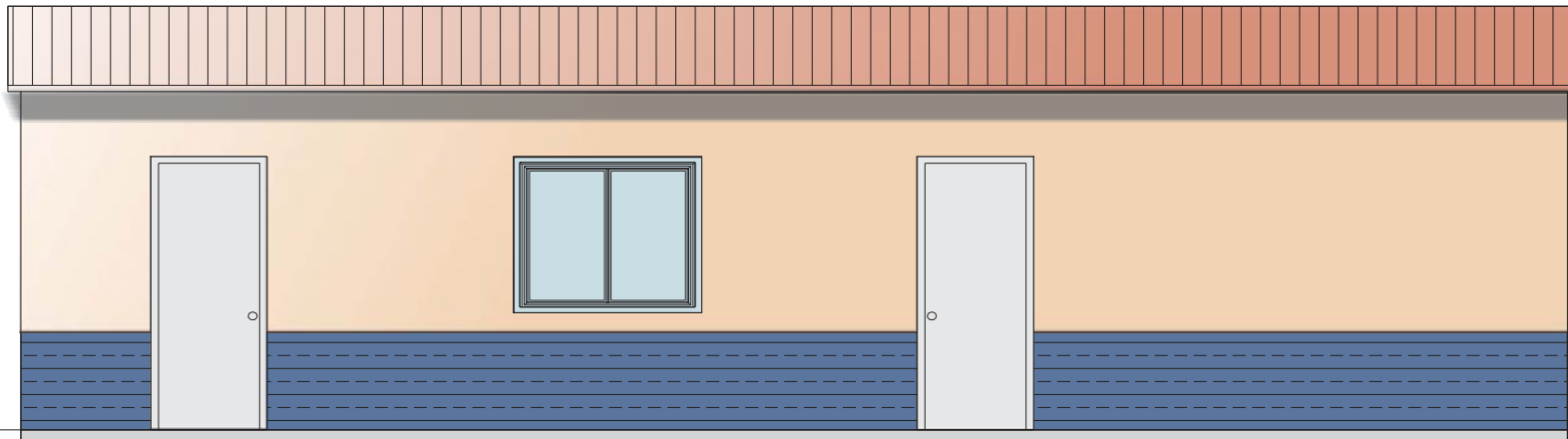


ELECTRICAL LEGEND	
\$	- LIGHT SWITCH @ 1350 AFL (UNO)
	- 2x36W DIFFUSED FLUORESCENT LIGHT FITTINGS
	- DOUBLE GPO 10 AMP
	- EXTERNAL BULKHEAD LIGHT W/P
	- CIRCUIT BREAKER BOARD (POE)

1	1500x800 TABLE
2	COMMERCIAL WASHING MACHINE
3	COMMERCIAL DRYER
4	600mm wide BENCH
D1	2040x870 EXTERNAL DOOR
W2	1029x1450 SLIDING WINDOW with FLYSCREENS



FLOOR PLAN



FL

FRONT ELEVATION

